

B250008

5264



- ▶ 主要技术特性(Main Specifications)
- ▶ 适用导线规格 (Applicable wire) : AWG28#~24#
- ▶ 适用基板厚度 (Applicable PC board thickness) : 1.2mm~1.6mm
- ▶ 温度范围 (Temperature range) : -25℃~+85℃
- ▶ 额定电压 (Voltage rating) : 250V AC, DC
- ▶ 额定电流 (Current rating) : 2A AC, DC
- ▶ 接触电阻 (Contact resistance) : $\leq 0.02\Omega$
- ▶ 绝缘电阻 (Insulation resistance) : $\geq 1000M\Omega$
- ▶ 耐压 (Withstanding voltage) : 1000V AC/minute

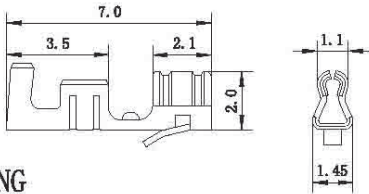
材料及电镀规格 Material and Finish

| 型号 Type | 材料 Material | 材料厚度 Material Thickness | 电镀规格 Finish |
|-------------|---------------------|-------------------------|---------------|
| 插座 WAFER | 塑胶 HOUSING | PA66 UL94V-0 | N/A |
| | 针PIN | 黄铜 Barss | 镀锡 Tin-plated |
| 孔座 HOUSING | PA66 UL94V-0 | — | N/A |
| 端子 TERMINAL | 磷青铜 Phosphor bronze | 0.2mm | 镀锡 Tin-plated |

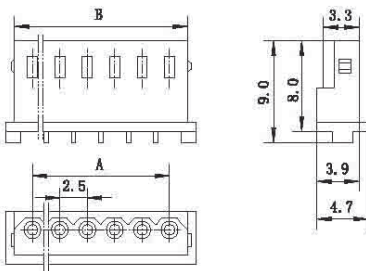
产品尺寸图 Product size chart

 单位: mm 一般公差: ± 0.20

TERMINAL

B250008-4 **5264**


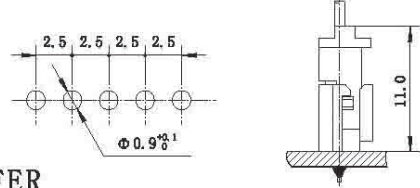
HOUSING

B250008-2


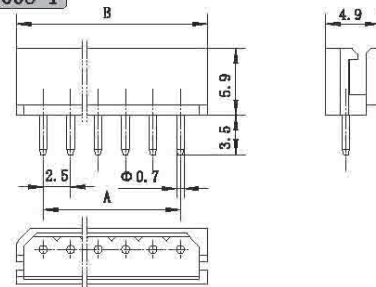
HOUSING

| 极数 Circuits | 型号 Type | 尺寸(Dimensions)mm | | 备注型号 P. S. Type |
|----------------|--------------|------------------|------|--------------------|
| | | A | B | |
| 2 | B250008-2-02 | 2.5 | 5.8 | 5264-02Y |
| 3 | B250008-2-03 | 5.0 | 8.3 | 5264-03Y |
| 4 | B250008-2-04 | 7.5 | 10.8 | 5264-04Y |
| 5 | B250008-2-05 | 10.0 | 13.3 | 5264-05Y |
| 6 | B250008-2-06 | 12.5 | 15.8 | 5264-06Y |
| 7 | B250008-2-07 | 15.0 | 18.3 | 5264-07Y |
| 8 | B250008-2-08 | 17.5 | 20.8 | 5264-08Y |
| 9 | B250008-2-09 | 20.0 | 23.3 | 5264-09Y |
| 10 | B250008-2-10 | 22.5 | 25.8 | 5264-10Y |
| 11 | B250008-2-11 | 25.0 | 28.3 | 5264-11Y |

安装尺寸(Mounting measurement)



WAFER

B250008-1


WAFER

| 极数 Circuits | 型号 Type | 尺寸(Dimensions)mm | | 备注型号 P. S. Type |
|----------------|--------------|------------------|------|--------------------|
| | | A | B | |
| 2 | B250008-1-02 | 2.5 | 7.4 | 5264-02A |
| 3 | B250008-1-03 | 5.0 | 9.9 | 5264-03A |
| 4 | B250008-1-04 | 7.5 | 12.4 | 5264-04A |
| 5 | B250008-1-05 | 10.0 | 14.9 | 5264-05A |
| 6 | B250008-1-06 | 12.5 | 17.4 | 5264-06A |
| 7 | B250008-1-07 | 15.0 | 19.9 | 5264-07A |
| 8 | B250008-1-08 | 17.5 | 22.4 | 5264-08A |
| 9 | B250008-1-09 | 20.0 | 24.9 | 5264-09A |
| 10 | B250008-1-10 | 22.5 | 27.4 | 5264-10A |
| 11 | B250008-1-11 | 25.0 | 29.9 | 5264-11A |